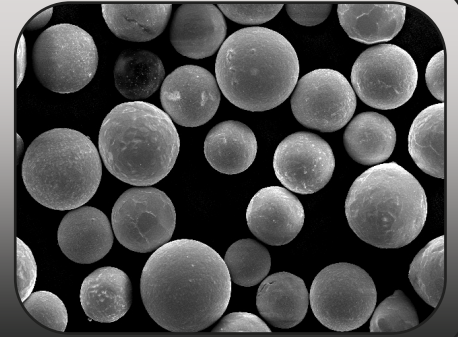


## Product Data Sheet

**WP 60S-30 / WP 60S-40**  
**WP 60S-50**



### Product Overview

C&M Technologies is pleased to introduce WP 60S series of premium PTA materials. Our WP 60S is a blended material that consists of 60 wt.% Spherical Cast/Cast-carbide and 40 wt.% of an Atomized Self-Fluxing Nickel-base Alloy. The matrix material is carefully selected for optimum wear performance in specific applications.

The overlays welded with C&M WP 60S, at optimized parameters, can be distinguished by a very homogenous carbide distribution throughout the entire weld thickness. This uniform distribution improves wear performance under most conditions. Multi-layer welding is possible with C&M WP 60S if care is taken and the carbide distribution is not disturbed.

### Material Properties

Composition: CFS/CF 60%\*  
 Ni-Alloy 40%\*

Grain Sizes: -180, +45µm\*

Morphology: Blend

\*Grain size and blend weight % can tailored to specific requirements

### Typical Overlay Properties

Micro Hardness (HV 0.1) :

CFS 2800 - 3100

CF 2200 - 2500

Macro Hardness (HRc) :

Ni-Alloy 30 - 50<sup>1</sup>

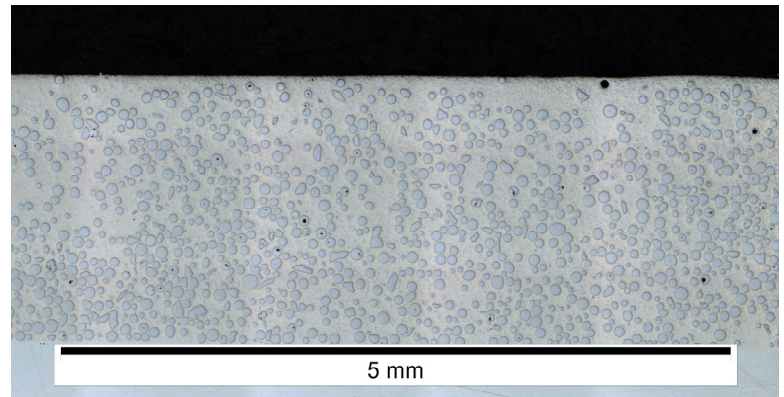
Porosity (%) : < 1

Deposit Efficiency (%) : >70%<sup>2</sup>

**Note**<sup>1</sup>: Hardness varies depending on matrix material selected

**Note**<sup>2</sup>: Deposit efficiency is influenced by process parameters

### Typical Microstructure



WP 60S-40

### Packaging Info

#### Description

#### Packaging Sizes

WP 60S-30

5kg/Bottle or 25kg/Pail

WP 60S-40

5kg/Bottle or 25kg/Pail

WP 60S-50

5kg/Bottle or 25kg/Pail

Please contact us with all questions and inquiries.

[www.c-m-tech.com](http://www.c-m-tech.com)