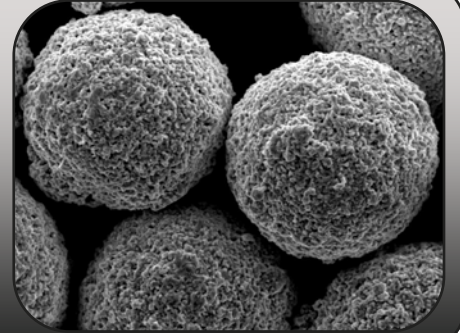


Product Data Sheet

TAS CrC-410



Material Properties

Composition: C 9.5%
 Ni 20%
 Cr 70%

Grain Size: -45, +15 μ m

Morphology: Agglomerated & Sintered

Typical Coating Properties

Micro Hardness (HV 0.3) : 1100 - 1200

Porosity (%) : < 2

Deposit Efficiency (%) : 30 - 35

Spray Parameters

		Metric	Standard
Kerosene	Pressure :	8.3 bar	120 psi
	Flow :	26 l/hr	6.75 gal/hr
Oxygen	Pressure :	9.7 bar	140 psi
	Flow :	900 nlpm	1900 scfh
Combustion	Pressure :	0.78 MPa	113 psi
Stoichiometric Ratio :		λ 1.02	λ 1.02
Carrier Flow (Ar) :		3.0 nlpm	6.5 scfh
Barrel Length :		152 mm	6 in
Spray Distance :		330 mm	13 in
Spray Rate :		55 - 80 g/min	7 - 10 lb/hr

Typical Microstructure



*Spray parameters are intended as a starting point and may require additional adjustment to meet specific coating properties.