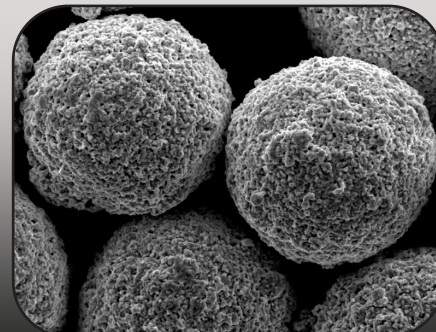


## Product Data Sheet

# TAS WC-310



### Material Properties

Composition: WC 83%  
 Co 17%

Grain Size: -45, +15 $\mu$ m

Morphology: Agglomerated & Sintered

### Typical Coating Properties

Micro Hardness (HV 0.3) : 1050—1150

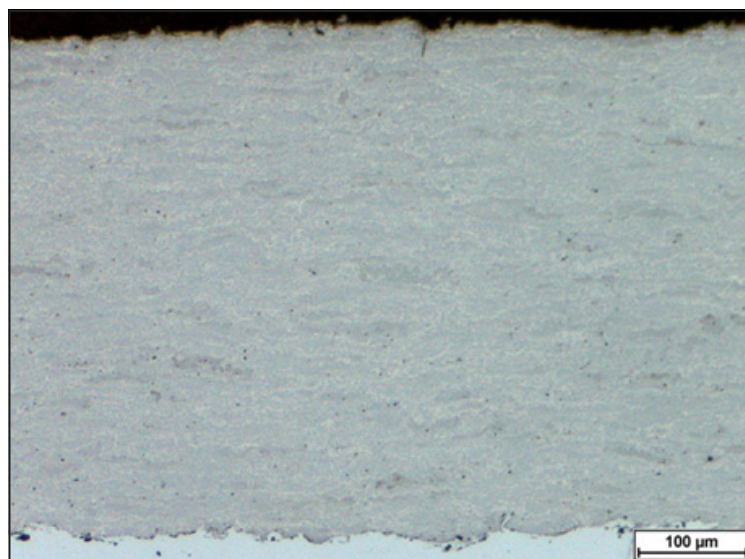
Porosity (%) : < 1

Deposit Efficiency (%) : 48 - 52

### Spray Parameters

		Metric	Standard
Kerosene	Pressure :	8.3 bar	120 psi
	Flow :	22.7 l/hr	6 gal/hr
Oxygen	Pressure :	9.7 bar	140 psi
	Flow :	945 nlpm	2000 scfh
Combustion	Pressure :	0.72 MPa	105 psi
Stoichiometric Ratio :		$\lambda$ 1.20	$\lambda$ 1.20
Carrier Flow (Ar) :		7.5 nlpm	16 scfh
Barrel Length :		152 mm	6 in
Spray Distance :		300 - 350 mm	12 - 14 in
Spray Rate :		80 - 100 g/min	10 - 13 lb/hr

### Typical Microstructure



\*Spray parameters are intended as a starting point and may require additional adjustment to meet specific coating properties.