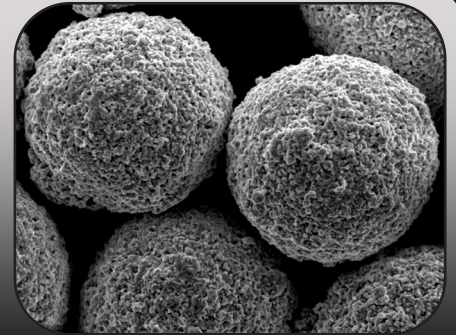


## Product Data Sheet

# TAS WC-340



### Material Properties

Composition: WC-10Co4Cr  
 Grain Size: -45, +15 $\mu$ m  
 Production Method : Agglomerated & Sintered  
 Morphology: Spherical  
 Apparent Density: 4.8 - 5.2 g/cc

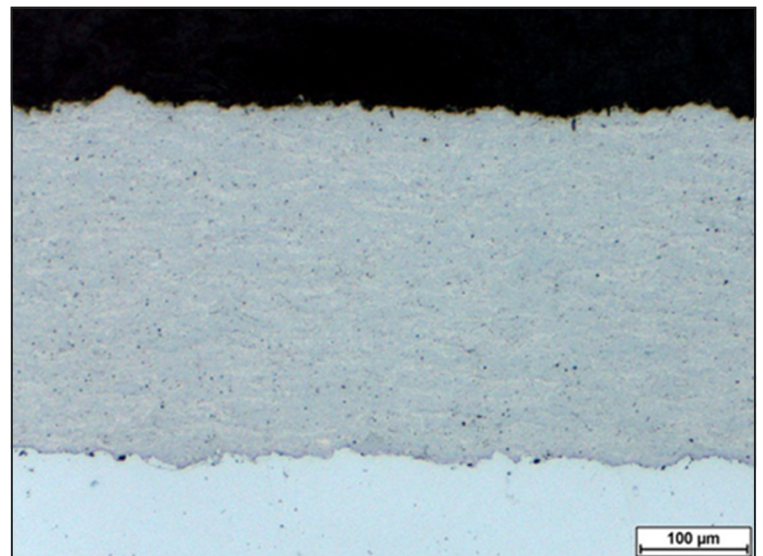
### Typical Coating Properties

Micro Hardness (HV 0.3) : 1250 - 1350  
 Porosity (%) : < 1  
 Deposit Efficiency (%) : 45 - 50  
 Bond Strength: >80MPa (> glue)

### Spray Parameters - JP5000

		Metric	Standard
Kerosene	Pressure :	8.3 bar	120 psi
	Flow :	24.8 l/hr	6.5 gal/hr
Oxygen	Pressure :	9.7 bar	140 psi
	Flow :	970 nlpm	2050 scfh
Combustion	Pressure :	0.76 MPa	110 psi
Stoichiometric Ratio :		$\lambda$ 1.15	$\lambda$ 1.15
Carrier Flow (Ar) :		7.5 nlpm	16 scfh
Barrel Length :		152 mm	6 in
Spray Distance :		300 - 350 mm	12 - 14 in
Spray Rate :		80 g/min	10 lb/hr

### Typical Microstructure



\*Spray parameters are intended as a starting point and may require additional adjustment to meet specific coating properties.