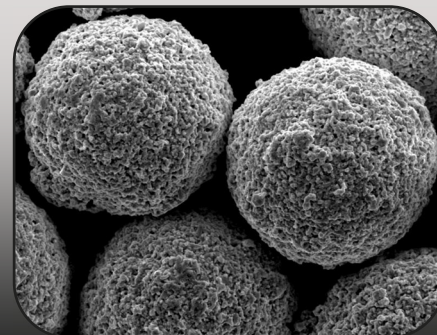


Product Data Sheet

TAS WC-380



Material Properties

Composition: WC-15NiCr
 Grain Size: -45, +11 μ m
 Production Method: Agglomerated & Sintered
 Morphology: Spherical
 Apparent Density: 4.4 - 4.8 g/cc

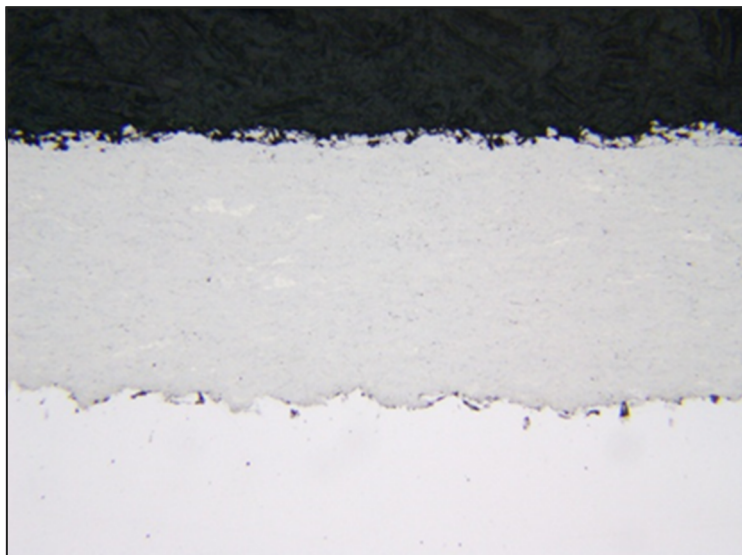
Typical Coating Properties

Micro Hardness (HV 0.3): 1150 - 1350
 Porosity (%): < 1
 Deposit Efficiency (%): 40 - 45
 Bond Strength: >80MPa (> glue)

Spray Parameters - JP5000

		Metric	Standard
Kerosene	Pressure :	8.3 bar	120 psi
	Flow :	23.0 l/hr	6.0 gal/hr
Oxygen	Pressure :	9.7 bar	140 psi
	Flow :	900 nlpm	2050 scfh
Combustion	Pressure :	0.72 MPa	105 psi
Stoichiometric Ratio :		λ 1.15	λ 1.15
Carrier Flow (Ar) :		8.0 nlpm	18 scfh
Barrel Length :		152 mm	6 in
Spray Distance :		330 mm	13 in
Spray Rate :		80 g/min	10 lb/hr

Typical Microstructure



*Spray parameters are intended as a starting point and may require additional adjustment to meet specific coating properties.